

Going Home after Percutaneous Coronary Intervention (PCI)

Vancouver General Hospital

899 West 12th Avenue

Vancouver BC V5Z 1M9

Tel: 604-875-4111

Heart Centre

St. Paul's Hospital

1081 Burrard Street

Vancouver, BC V6Z 1Y6

Tel: 604-682-2344

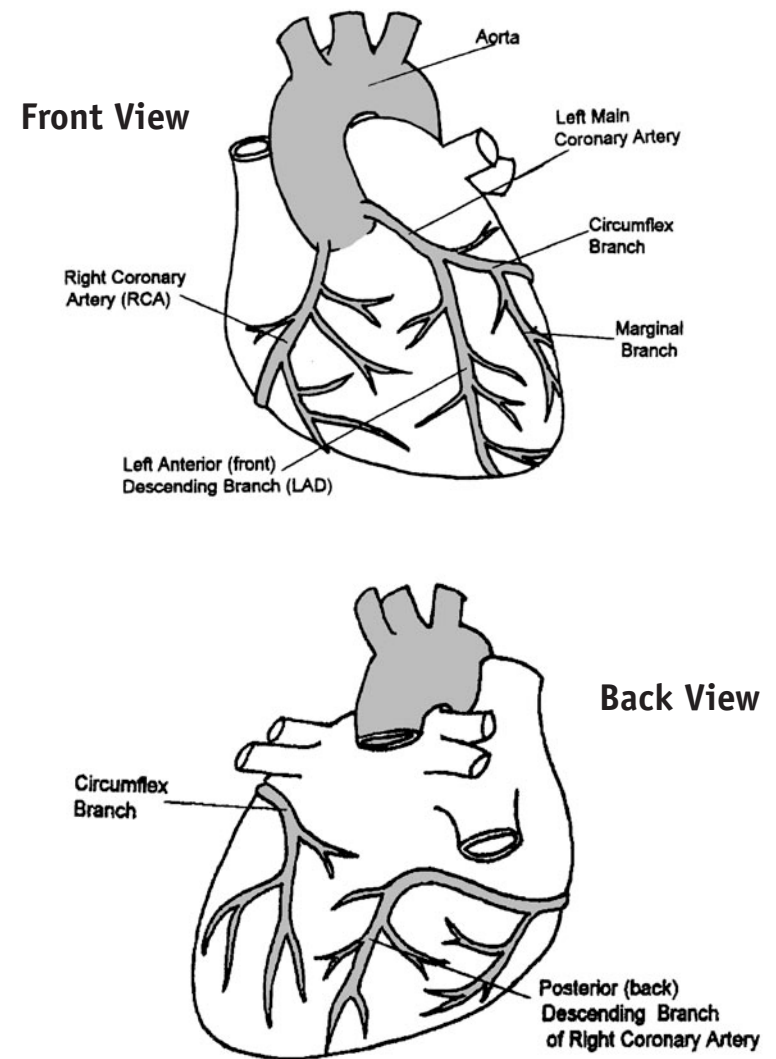


How you want to be treated.

Table of Contents

The heart and coronary arteries	1
Discharge instructions	2
Dressing care	3
Medications	4
Angina	5
Exercise guidelines	6
Special considerations	7
Sexual activity	7
Special considerations	7
Driving	8
Returning to work	8
Cholesterol and diet	9
6 steps to heart-healthy eating	9
Smoking	10
Alcohol.....	10
Community and other resources	11
Cardiac education	11
Cardiac exercise programs	12
Nutrition for a healthy heart	13
Stop smoking.....	14
Stress management.....	15

The Heart and Coronary Arteries



Discharge Instructions

1. You must make follow up appointments with your:
 - a) Family Doctor in one week: _____
 - b) Your referring Cardiologist or specialist in one month: _____
2. Ask your family doctor about your return to work
3. The BC Motor Vehicle Act has regulations about driving for heart patients. Ask your family doctor and see page 8.
4. a) **Do Not Stop** Aspirin without asking your cardiologist.
b) **Do Not Stop** clopidogrel (Plavix®) before your prescription is finished without asking your cardiologist.
5. **Do Not** have a magnetic resonance imaging (MRI) scan during the **First 6 Weeks After** stent placement without a cardiologist's approval.
6. Metal detectors do not affect the stent(s).

Refer to the Centre Page for your medication calendar.

Dressing Care

- ◆ You may remove the bandage 1 day after your Percutaneous Coronary Intervention (PCI).
- ◆ You may shower 1 day after your PCI.
- ◆ **Do Not** sit upright for more than 1 hour at a time during the first day at home.
- ◆ If travelling for long periods, stretch your legs out and get up and walk every hour during the first day going home.
- ◆ You may see a hematoma (soft lump or bruise) around the hole or even down the leg where the PCI was done. This is normal.
- ◆ **It is Not Normal** when the hematoma suddenly gets bigger or harder. This means you are bleeding. If this should happen you must:
 - Lie down
 - Ask someone to **Press Down Hard for 15 Minutes** just above the hole where the PCI was done.
 - You will know if you are doing this right if the hematoma does not get bigger or harder.
 - **Do Not Stop** pressing to check under your fingers during the first 15 minutes.
 - If the bleeding has stopped after 15 minutes, **rest and lie down for 2 more hours** before getting up.

IMPORTANT:

**If the bleeding does not stop after 15 minutes,
Call 911
for an ambulance to take you to the hospital.**

Medications

For your safety, we recommend that you:

- ◆ **Know** the names, doses and how often you take all the medications prescribed to you by your doctor.
- ◆ **Know Why** you are taking all your medications.
- ◆ **Always** bring a current list of your medications and the correct pill bottles each time you go to the hospital.
- ◆ **Talk** with your doctor before taking any herbal supplements.

Your community pharmacist is a good resource.

See the centre pull-out for your medication calendar.

Some Common Types of Cardiac Medications

- ◆ **ACE Inhibitor:** Lowers blood pressure, improves heart function, reduces risk of heart attacks and prolongs life. For example: captopril, enalapril, ramipril and tradenomes.
- ◆ **Anticoagulant** (“blood thinner”): Prevents clots in blood vessels and many other conditions, reduces risk of heart attacks and prolongs life. For example: warfarin (Coumadin®).
 - Warfarin (Coumadin®) **Is Not** a substitute for Aspirin or clopidogrel (Plavix®).
- ◆ **Antiplatelet** (“blood thinner”): Prevents clots in blood vessels, reduces risk of heart attacks, prevents clots in newly placed stents and prolongs life. For example: Aspirin and clopidogrel (Plavix®).
 - **Do Not Stop** Aspirin without asking your cardiologist.
 - **Do Not Stop** clopidogrel (Plavix®) before your prescription is finished without asking your cardiologist.

- ◆ **Angiotensin Receptor Blocker (ARB):** Lowers blood pressure, improves heart function and can be used as a substitute for ACE Inhibitors. For example: candesartan, losartan and valsartan.
- ◆ **Beta Blocker:** Lowers blood pressure and heart rate, reduces angina, improves heart function, reduces risk of heart attacks and prolongs life. For example: acebutolol, atenolol and metoprolol.
- ◆ **Calcium Channel Blocker:** Treats angina, lowers blood pressure and can be used to control heart rate. For example: amlodipine, diltiazem, nifedipine, verapamil and felodipine.
- ◆ **Lipid Lowering Agent:** (“statin”) Lowers cholesterol and other fats in the blood, reduces risk of heart attacks and prolongs life. For example: atorvastatin, lovastatin, pravastatin, simvastatin, gemfibrozil and niacin.
- ◆ Your community pharmacist is a good resource for more information
- ◆ See the centre pull out for your medication calendar.

Angina

- ◆ In about 25% of patients who have had a PCI, angina comes back.
- ◆ Treat the angina the same way as you did before your PCI:
 - Lie down.
 - Nitroglycerin 0.4mg - spray once under the tongue
 - If the pain doesn't get better after one spray, or gets worse, **Call 911**
 - If the angina stops, tell your family doctor as soon as you can.
- ◆ Remember to check your nitroglycerin for the expiry date

Exercise Guidelines

- ◆ The purpose of a PCI is for you to return to your previous level of activity and enjoy life.
- ◆ However, during the initial period after the procedure, common sense and moderation are recommended.
- ◆ **No** heavy activities for **5 Days**. For example:
 - **Do Not** lift, push or pull anything that weighs more than 10 pounds (e.g. heavy laundry, groceries or a golf cart).
 - **Do Not** exercise aggressively, golf, vacuum, mow or rake lawns, or move furniture.
- ◆ After the first 7 days, after you have seen your family doctor, it is important for you to do moderate exercise for 30 minutes or more, 5 times a week. This will strengthen your heart.
- ◆ If you were not exercising before, walk daily with a gradual increase in distance and speed. An example of a walking schedule is:

Day	Blocks Out	Blocks In	Total Blocks
1	1/2	1/2	1
2	1	1	2
3	1 1/2	1 1/2	3
4	2	2	4
5	2 1/2	2 1/2	5
6	3	3	6
7	3 1/2	3 1/2	7
8	4	4	8
9	4 1/2	4 1/2	9
10	5	5	10

- ◆ Aim for a goal of 24 blocks out and 24 blocks in, about 36 minutes each way.

- ◆ See page 12 to find a cardiac exercise program near you.
- ◆ **Special Considerations:**
 - **Always** carry your nitroglycerin spray or tablets with you.
 - **Do Not** walk immediately after meals; wait 1 hour.
 - Walking in extreme temperatures, such as very hot summer days or cold, rainy or snowy winter days. This can increase tiredness and angina. You should avoid this.

Sexual Activity

- ◆ **Ask Your Cardiologist** when you can resume sexual activities.
- ◆ **As a Rule**, you may resume sexual activities if you can:
 - Climb 2 flights of stairs at a fairly brisk pace **without:**
 - becoming short of breath or
 - having angina
- ◆ **Special Considerations:**
 - Many medications can affect sexual function. Do not stop any medications on your own. Discuss this with your doctor first.
 - **Do Not** have sexual activities to “prove” that you have recovered.
 - **Do not** begin sexual activities immediately after meals; wait 2 hours.
 - **Avoid** sexual activity after drinking alcohol, smoking or if you feel tired.
 - Having your partner on top may reduce your workload on your heart.
 - If you feel uneasy about resuming sexual activity, allow more time for hugging, caressing and getting to know your partner again.

Driving

- ◆ **Ask Your Cardiologist** when you can resume driving/flying privately or commercially and/or operating heavy equipment.
- ◆ Someone **MUST** drive you home on the day of discharge.
- ◆ If you have had a heart attack, the **Motor Vehicle Act (MVA) states by law you cannot drive privately for 30 days or drive commercially for the first 3 months after a heart attack.** Insurance may not cover you and you put yourself and others at risk.
- ◆ If you have **NOT** had a heart attack, **you may drive 2 days after a PCI, or drive commercially in 7 days after a PCI with a 6 month doctor follow up appointment with your doctor.**
- ◆ Someone **MUST** be with you the first time you drive.
- ◆ **Avoid** stressful situations that may increase your blood pressure. For example, night driving and rush hour traffic.

Returning to Work

- ◆ Your return date will depend on whether you have had a heart attack, any complications, the type of work you do, your age and your overall physical stamina. Ask your family doctor about the specific date.

Cholesterol and Diet

- ◆ The amount of cholesterol in your blood is affected by many factors.
- ◆ The **total fat in food** has **more of an effect on blood cholesterol** than cholesterol in food.
- ◆ The following **6 steps to heart healthy eating** are important to helping you control your weight and lower your blood cholesterol:
To begin, start at step 1. As you complete each step, add another step. Continue until you have included all 6 steps in your heart healthy eating!
 - **Step 1:** Reduce all added fats.
 - **Step 2:** Eat more whole grain products.
 - **Step 3:** Eat more vegetables and fruit.
 - **Step 4:** Choose lower fat milk products.
 - **Step 5:** Select smaller, leaner portions of meat and alternatives. Eat more fish.
 - **Step 6:** Limit high fat snacks and desserts
 - **Success!** You did it! Having a heart healthy diet will help you keep your weight in a healthy range. This in turn will help your heart.
- ◆ **Reduce** your salt intake. Added salt increases water retention in your body, increases your blood pressure and increases the amount of work on your heart.

Smoking

- ◆ You should stop smoking.
- ◆ Smoking is especially dangerous during the first 4 weeks after a PCI because it will contribute to “clotting” the recently placed stent(s). This can cause a heart attack.
- ◆ Smoking causes all your heart and brain arteries to narrow. This increases the risk for a heart attack and stroke.
- ◆ You do not have to struggle on your own.
- ◆ Think about a stop-smoking program. Ask your doctors or nurses to learn more about this.

Alcohol

- ◆ For men, no more than 2 drinks a day.
- ◆ For women, no more than 1 drink a day.

Some Common Feelings

Sometimes people with heart conditions feels sad, down, or just not interested in life. Sometimes they feel anxious or nervous.

If you are bothered by these feelings, call your family doctor. Help is available. Your overall health and your heart health will improve if you get help.

Community and other Resources

Cardiac Education

- ◆ **Heart and Stroke Foundation of Canada**
www.heartandstroke.ca
(also follow links to BC & Yukon section for local programs)
1-888-473-4636
- ◆ **St. Paul’s Hospital Healthy Heart Program**
www.healthyheart.org
604-806-8591
- ◆ **www.heartbc.ca**
follow link to “Community Heart Health Database”
- ◆ **Diagnostic Tests, Procedures, Surgery and other Treatments for Heart Disease**
www.americanheart.org/presenter.jhtml?identifier=504
1-800-242-8721
- ◆ **Heartsite.com**
www.heartsite.com
Contains information, especially animations describing circulation, different tests and cardiac procedures.
- ◆ **Intellihealth**
www.intellihealth.com
Wide-ranging information on many health topics. There is a great section for caregivers.

Cardiac Exercise Programs

The following programs offers different types of exercises. It is best to call the program directly to find out which program is suitable for you and whether or not you need a doctor's referral.

www.heartbc.ca/cpsg/s6bcrehab.htm

1-800-663-2010 for a program near you.

- ◆ Burnaby Hospital
604-412-6488
- ◆ Chilliwack YMCA
604-792-3371
- ◆ Kamloops, YMCA
250-372-7725
- ◆ Central Okanagan Association for Cardiac Health
"COACH"
250-763-3433
- ◆ New Westminster YMCA
604-521-5801
- ◆ North Vancouver: Lion's Gate Hospital
604-984-5933 / 604-984-5752
- ◆ North Vancouver: Delbrook Recreation Centre
250-987-7529
- ◆ North Vancouver: Harry Jerome Recreation Centre
604-983-6423
- ◆ Oak Bay Recreation Centre: Henderson Centre
250-595-7946
- ◆ Prince George: Edmonton Street
250-565-7432
- ◆ Prince George YMCA
250-562-9341
- ◆ Richmond: Minoru Pavillion
604-718-8004

- ◆ Smithers: Bulkley Valley District Hospital
250-847-4406
- ◆ Vancouver Hospital Cardiac Rehab
604-875-5389
- ◆ Vancouver: Jewish Community Centre
604-257-5111 extension 214
- ◆ Vancouver: Munro Clinic
604-875-5389
- ◆ Vancouver: St. Paul's Hospital Healthy Heart Program
604-806-8591
www.healthyheart.org
- ◆ Vancouver: Shaughnessy Cardiac Alumni Members Society
604-266-4356 / 604-943-0984 / 604-261-4774
- ◆ Vancouver: S.U.C.C.E.S.S. (in Cantonese)
604-684-1628
- ◆ Vancouver YMCA Downtown
604-633-3573
- ◆ Vancouver: South Slope Family YMCA
604-324-9622
- ◆ Vernon Jubilee Hospital
250-558-1203 extension 204 / 396
- ◆ Vernon Parks and Recreation
250-545-6035
- ◆ Victoria YMCA
604-386-7511
- ◆ West Vancouver: Eagle Harbour Community Centre
604-925-7270
- ◆ Heart in Motion Walking Clubs located in the Lower Mainland, BC, and Yukon Areas.
www.heartbc.ca/resources/r_HSFHeartsInMotion.htm
1-888-473-4636
 - These clubs provide the healthy benefit of walking in a fun and social environment.

Nutrition for a Healthy Heart

- ◆ Canada's Food Guide
www.hc-sc.gc.ca/hpfb-dgpsa/onpp-bppn/food_guide_rainbow_e.html
Meal planning to eat heart healthy and risk factors of heart disease.
- ◆ Dial-a-Dietitian
www.dialadietitian.org
604-732-9191
1-800-667-3438
Information on nutrition and nutritional resource.
- ◆ Dietitians of Canada
www.dietitians.ca
Source of information on food and nutrition for Canadians.
- ◆ Healthcheck
www.healthcheck.org
This is a program that will help you make wise food choices while grocery shopping (based on Canada's Food Guide to Health Eating).
- ◆ Becel Canada
www.becelcanada.com
1-800-563-5574
Meal planning to eat heart healthy and risk factors of heart disease.

Stop Smoking

- ◆ B.C. Lung Association: Freedom from Smoking
www.bc.lung.ca
1-800-665-5864
604-731-5864
- ◆ Quit Now By Phone
1-877-455-2233
24 hours/day, 100 languages spoken
- ◆ Vancouver Coastal Health Authority
www.vch.ca - click on "Healthy Living"
- ◆ B.C. Lung Association: Quit Now
<http://bc.quitnet.com>
- ◆ St. Paul's Hospital Heathy Heart (Smoking Cessation) Program
604-806-8591
- ◆ Health Canada: Go Smoke Free
www.gosmokefree.com
1-866-318-1116
The facts about health effects, second hand smoke, toxic emissions, quitting and the tobacco industry.
- ◆ Chinese Stop Smoking Helpline
1-888-566-5864
Mandarin and Cantonese service
- ◆ Canadian Lung Association
1-888-566-5864
www.lung.ca
- ◆ Canadian Cancer Society: Fresh Start
1-888-939-3333
www.cancer.ca

Medication Calendar for: _____ Date: _____ Completed By: _____

****Always bring a current list of your pills with the Original Pill Bottles to the hospital****
****Talk to your doctor before taking any herbal supplements****

MEDICATION NAME	DOSE	BREAKFAST	LUNCH	DINNER	BEDTIME	COMMENTS AND INSTRUCTIONS	LAST DOSE TAKEN AT
	____mg ____ a Day					ACE Inhibitor: Lowers blood pressure, improves heart function, reduces risk of heart attacks and prolongs life.	
Warfarin (Coumadin®, Apo-Warfarin®, Taro-Warfarin®, Gen-Warfarin®)	____mg Once a day Or as directed by your doctor					Anticoagulant: Prevents clots in many conditions. Your dose may change according to your blood test (INR). Warfarin Is Not a substitute for Aspirin (ASA®) or Clopidogrel (Plavix®). Your target INR is between: _____	
Aspirin (ASA®) <input type="checkbox"/> Enteric Coated <input type="checkbox"/> Plain	____mg Once a Day					Antiplatelet: Prevents clots in blood vessels, reduces risk of heart attacks and prolongs life. Do Not Stop without asking your cardiologist. *Take ____mg for ____ then *Take ____mg for ____.	
Clopidogrel (Plavix®)	75 mg Once a Day					Antiplatelet: Prevents clots in blood vessels, reduces risk of heart attacks and taken with Aspirin to prevent clots in newly placed stents. Do Not Stop without asking your cardiologist. *Take for ____ only!	
	____mg ____ a Day					ARB (Angiotensin Receptor Blocker): Lowers blood pressure, improves heart function and can be used as a substitute for ACE Inhibitors.	
	____mg ____ a Day					Beta Blocker: Lowers blood pressure and heart rate, treats angina, improves heart function, reduces risk of heart attack and prolongs life.	
	____mg ____ a Day					Calcium Channel Blocker: Prevents angina, lowers blood pressure and can be used to control heart rate.	
	____mg Once a Day					Lipid Lowering Agent: Lowers cholesterol and other fats in the blood, reduces risk of heart attacks and prolongs life.	

***** Nitroglycerin 0.4mg Spray – spray once under the tongue only when needed for angina. *****
**** May repeat one spray after 5 minutes. If angina is still present, call 911. ****

For more copies, go online at <http://vch.eduhealth.ca> or email pchem@vch.ca and quote Catalogue No. **FD.331.G561**

© Vancouver Coastal Health, February 2006

The information in this document is intended solely for the person to whom it was given by the health care team.

www.vch.ca